

# VIP Consulting Engineers (Pty)

**IMPROVING LIVES**

Since 1976

[www.vipconsulting.co.za](http://www.vipconsulting.co.za)

# Inside this Newsletter

<b>VIP and its MVP</b>	<b>01</b>
<b>A message from the directors</b>	<b>02</b>
<b>About VIP Consulting Engineers</b>	<b>05</b>
<b>Completed Projects</b>	<b>06</b>
<b>Completed Project: Maranatha Church</b>	<b>07</b>
<b>Completed Project: Witfontein Pumpstation</b>	<b>08</b>
<b>Completed Project: Witfontein Access Road</b>	<b>09</b>
<b>Completed Project: JDA Central Fire Station</b>	<b>10</b>
<b>Completed Project: Koemacau Copper Mine (Botswana)</b>	<b>11</b>
<b>Current Project 1 (ERWAT)</b>	<b>12</b>
<b>Currents Project 2 (SANParks - Balule)</b>	<b>14</b>
<b>The Future Is Here</b>	<b>15</b>
<b>Emerging Trends in Civil Engineering for 2025</b>	<b>16</b>
<b>Interesting Facts About Civil Engineering</b>	<b>17</b>
<b>The Heart Of VIP Consulting Engineers</b>	<b>18</b>

# VIP and its MVPs

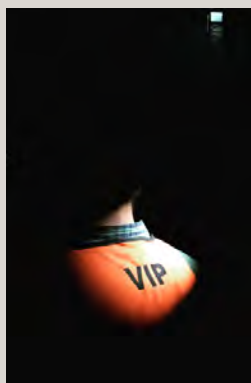
At VIP Consulting Engineers, we often say we are more than just co-workers, we are family. It's a sentiment you can feel in the way we celebrate each other's wins, rally together during challenges, and bring genuine care and thoughtfulness to everything we do.

Every day, our team proves that success is not just about hard work - it is about working hard with heart. Whether it is lending a hand on a tough project, sharing a laugh over coffee, or simply showing up for one another, we create something truly special here: a community rooted in kindness, collaboration, and respect.

This newsletter is more than a roundup of updates, it's a reflection of the incredible people who make this place thrive.

"Alone we can do so little; together we can do so much."

~ Helen Keller



# Message from the Directors



Johan Jansen van Rensburg

Johan has been with VIP Consulting Engineers since August 1996, marking 29 years of dedicated service. He sees the company as more than just a workplace—it's a family of skilled professionals overcoming challenges together.

Passionate about engineering, Johan enjoys the diversity of projects, especially the planning phase, which blends analysis and problem-solving. His main area of interest is Stormwater management.

For 2025, his guiding motto is: "The Lord sees you," reflecting his lifelong faith. With his experience and commitment, Johan remains a vital part of VIP Consulting Engineers' success.



Fanus Prinsloo

Fanus, who has been part of the VIP Consulting Engineers family for 35 years, describes the company as a close-knit family. According to him, every employee is like a family member, and everyone relies on one another to achieve success.

He uses an interesting rugby analogy to explain the dynamics at VIP. Fanus says it is each person's responsibility to keep the ball in the air and handle their own tackles. When someone else has to make your tackles, problems often arise.

He is committed to leading the company further as a director, using his knowledge, experience, and wisdom to build a strong foundation for the future.

**His quote for the year is, "Dream it, and live towards it."**



Shiven Ramsaru

Since joining us in 2012, Shiven has been an integral part of our company's growth and success, embodying the values of dedication, expertise, and innovation.

VIP Consulting Engineers is more than just a company—we are a team driven by dedication, resilience, and a relentless pursuit of excellence. We work hard, stand together in challenging times, and embrace every opportunity to live life to the fullest.

**"Success in 2025 isn't just about working hard—it's about working together, embracing challenges, and turning every opportunity into growth."**



Gerrit Fourie

Since joining VIP in 2014, Gerrit has embarked on an 11-year journey, briefly exploring other opportunities twice for a few months before ultimately returning to the VIP family. His dedication and resilience reflect the strong connection he has with the company and its values.

Describing the work culture at VIP as hardworking and fast-paced, Gerrit emphasizes the wonderful environment and genuine sense of care among the team. This spirit of collaboration ensures that, even when challenges arise, everyone pulls together to keep moving forward.

**Gerrit believes that "A foundation is only as strong as what you build it for—and mine remains my family."**

**For the team, he shares this insight: "Like any good structure, we keep each other standing—support, strengthen, and build together!"**



Louis Mostert

Louis celebrates a milestone of eight years at VIP Consulting Engineers. His dedication and contribution to the team are sincerely appreciated, and his commitment plays a key role in the success of the work environment.

VIP Consulting Engineers' culture is rooted in people-centered values and a relaxed atmosphere that fosters a supportive environment. Open communication and teamwork are actively encouraged to ensure that every team member feels valued and supported—both on a personal and professional level.

**As Louis shares: "Dreams are not what you see in your sleep; they are the things that keep you awake." These inspiring words reflect his passion and drive in the workplace.**

# ABOUT VIP CONSULTING ENGINEERS

## Excellence since 1976

Established in 1976, VIP Consulting Engineers (Pty) Ltd. has been at the forefront of civil and structural engineering, offering specialized consultancy services across various sectors. With a rich history spanning nearly five decades, the firm has cemented its reputation as a leader in human settlements development.

## Comprehensive Service Portfolio

VIP Consulting Engineers provides a wide array of services tailored to meet the unique needs of both private and public sector clients:

- **Civil Engineering:** Delivering comprehensive solutions for infrastructure projects from concept to completion.
- **Structural Engineering:** Ensuring the safety and stability of buildings and structures through expert design and analysis.
- **Construction Management:** Overseeing construction projects with precision to ensure timely and cost-effective completion.
- **Environmental Impact Assessment:** Evaluating the environmental implications of projects to promote sustainable development.
- **Urban Planning:** Designing sustainable and efficient urban spaces to enhance community living
- **Low-Cost Housing:** Delivering safe, quality homes for underserved communities through precision and strong partnerships.

## Mission and Core Values

VIP Consulting Engineers is committed to providing high-quality services that enhance the quality of life for each client and community served. The firm's core values include excellence, pride, integrity, innovation, and respect, guiding their approach to every project.

# Completed Project

## Assessment of Vrede Outfall Sewer Line – Urgent Repairs Required:

VIP Consulting Engineers was appointed by Phumelela Local Municipality to assess and propose solutions for significant damage to the Vrede Outfall Sewer Line. Following a site inspection on April 25, 2023, it was confirmed that parts of the sewer system are severely blocked, and a critical section of the pipeline has been washed away, requiring urgent repairs to prevent further environmental and infrastructural damage.

### Key Findings & Proposed Solutions

#### Portion A – Blocked Sewer Line:

A major section of the outfall sewer system is completely blocked, causing raw effluent to overflow from manholes and spill into a nearby creek. This poses serious health and environmental risks.

#### Proposed Work:

- Unblocking of the 450mm sewer line between manholes MH1 and MH2
- Rectification of any structural defects in the pipeline
- Site rehabilitation and final inspections

#### Portion B – Broken Sewer Pipe:

A 450mm sewer pipe was washed away by the Vredespruit, leaving the sewer line completely disconnected. Pedestrians are currently using the damaged section as a bridge to cross the river.

#### Proposed Work:

- Temporary sewer bypass to maintain service
- Removal of damaged pipeline and installation of a new ductile iron pipe
- Reinforcement of the new pipe with concrete encasement to prevent future erosion
- Final testing and reconnection to the existing network

# Completed Project

## Maranatha Church - Civil and structural works:

VIP Consulting Engineers was commissioned to develop, design, and oversee the construction of all internal and external civil services for the Maranatha Church site in Riverfields, Kempton Park. These services encompassed the design and construction of internal and external access roads, stormwater and water systems, on-site parking facilities, and a 5,000m<sup>2</sup> concrete basement parking structure for the church. Additionally, VIP played a key role in designing and monitoring the construction of the site's new attenuation pond.

Beyond the church project, VIP was also entrusted with the design and construction oversight of the bulk earthwork terraces for the Maranatha Christian School, located adjacent to the Maranatha Community Church.



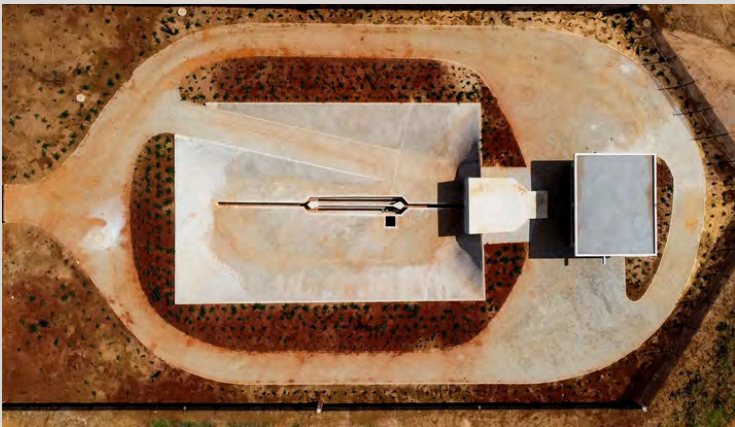
# Completed Project

## Witfontein Extension 95 Pumpstation:

VIP Consulting Engineers is proud to have played a key role in the design, development, and construction monitoring of the Witfontein Extension 95 Sewer Pump Station. This vital infrastructure project enhances wastewater management and ensures efficient sanitation services for the growing area.

The project involved extensive **civil engineering** efforts, including:

- Bulk Earthworks & Site Preparation – Excavation, grading, and compaction to establish a stable foundation for the pump station.
- Sewer and Water Infrastructure – Installation of sewer pipelines to integrate with the existing municipal network.
- Stormwater Management – Implementation of systems to prevent flooding and maintain optimal site drainage.
- Access Roads & Site Connectivity – Construction of durable access roads for maintenance and operational use.



To ensure longevity and resilience, our **structural engineering** team delivered:

- Reinforced Concrete Foundations & Superstructure – Designed to support heavy mechanical equipment and ensure durability.
- Pump Chambers & Storage Tanks – Water-tight, corrosion-resistant reinforced concrete structures for operational efficiency.
- Safety & Accessibility Features – Installation of platforms, ladders, and walkways for maintenance and monitoring.
- Housing for Mechanical & Electrical Systems – Structurally integrated solutions for pumps, valves, and control systems.

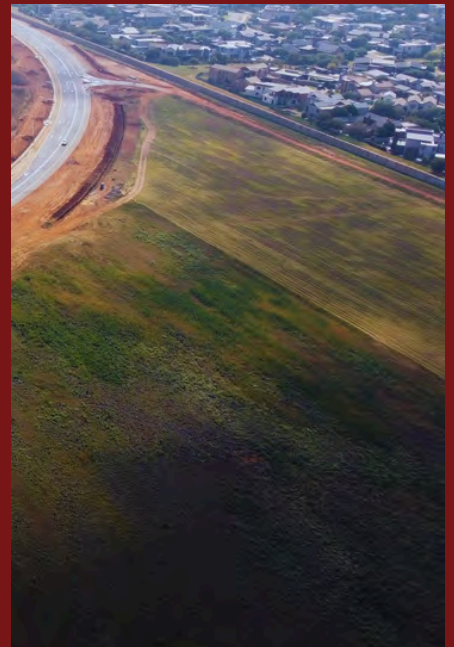
# Completed Project

## Witfontein Extension 109 Access Road:

As part of the initial phase of the R21 Expressway alignment, a major infrastructure project has been successfully undertaken to enhance connectivity and improve stormwater management in the Witfontein area.

This project involved the construction of a new access road serving Witfontein Extension 109 and Extension 111, providing improved accessibility and supporting future development. Additionally, a stormwater pipeline was installed in Extension 109 to enhance drainage and mitigate flooding risks.

VIP Consulting Engineers was entrusted with the design and construction oversight, ensuring the project was completed to the highest standards. This development marks a significant step in infrastructure expansion, supporting growth and sustainability in the region.



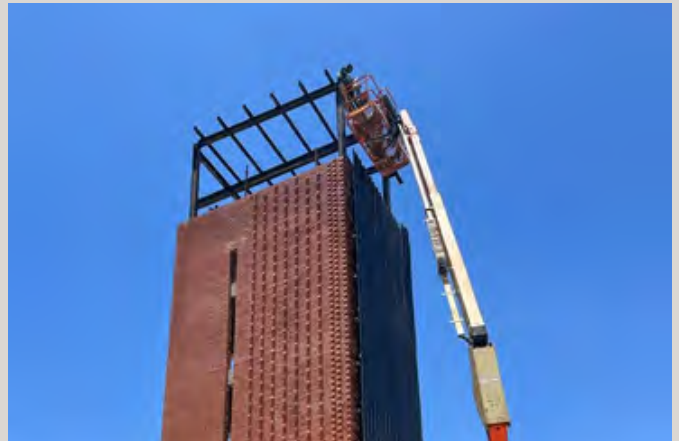
# Completed Project

## JDA Central Fire Station:

VIP Consulting Engineers, appointed by the Johannesburg Development Agency (JDA), has successfully completed the structural design review and construction monitoring for the new Johannesburg Central Fire Station in Marshalltown.

This state-of-the-art facility is now fully operational, enhancing the city's emergency response capabilities with modern infrastructure built to the highest safety and efficiency standards. VIP Consulting Engineers played a key role in ensuring quality construction, compliance with best practices, and the successful delivery of this vital project.

We are proud to have contributed to strengthening Johannesburg's emergency services and look forward to future projects that support urban development and public safety.



# Completed Project

## Koemacau Copper Mine (Botswana):

**Geotechnical investigation report for the filter and backfill plants, as well as the associated access roads for the Khoemacau Copper Mine, Botswana**

The Khoemacau Copper Mine is an underground copper mine, with Boseto located 25 kilometres from Toteng and Zone 5 another 35km further south, within the Kalahari Copper Belt, Ngamiland District of Botswana. The ore at Khoemacau is currently mined at Zone 5 from underground and transported by truck on a 35km purpose-built bitumen haul road to the Boseto processing plant. The copper concentrate is then transported by road to ports to Walvis Bay and Durban and shipped to customers worldwide.

The objectives of the geotechnical investigations were to provide geotechnical investigation information adequate with the design requirements, according to SAICE (2010) and SANS 10160-5, for the new Backfill and Filter Plants and the associated roads. Thus, to mitigate ground-related risk and allow the rational design of the proposed plants development. The outcome of the investigation was to provide recommendations for the design of structure foundations and road construction of the access roads.



# Current Project 1

## **ERWAT:**

### **Revolutionizing Water Care: Upgrading ERWAT's Essential Facilities**

At the heart of South Africa's water ecosystem lies ERWAT (Ekurhuleni Water Care Company), a critical hub where sewage from towns across the country converges for treatment. Our team has been entrusted with the extraordinary task of upgrading these facilities—a project that will enhance their capacity, efficiency, and sustainability for years to come.

This endeavor is far more than just infrastructure improvement; it's about safeguarding South Africa's water resources, protecting the environment, and ensuring healthier, more sustainable communities. By implementing cutting-edge civil engineering solutions, we are paving the way for ERWAT to continue its vital mission with even greater impact.

This project also stands as one of VIP Consulting Engineers' defining challenges for 2025. It is a bold undertaking that will test our expertise, resilience, and commitment to excellence—but it's one we are ready to tackle with determination and innovation.

With roots in our successful partnership with Riverfields, this project reflects the power of collaboration, expertise, and a shared vision for progress. Stay tuned as we take bold strides toward creating a future where innovation meets environmental stewardship!

### **Upgrading the Hartebeesfontein Water Care Works: Enhancing the capacity for future development**

Riverfields Development Company (Pty) Ltd, in partnership with ERWAT and VIP Consulting Engineers, has launched an ambitious project to upgrade the Hartebeesfontein Water Care Works (WCW) in Kempton Park. This initiative is a cornerstone of the Riverfields Development Area, aimed at supporting ongoing and future growth.

# Continuing:

## Project Goals

The project is focused on:

- Assessing the current infrastructure of the WCW.
- Identifying and addressing deficiencies.
- Expanding capacity to accommodate new developments.
- Planning for future extensions in alignment with the area's master plan.

## Building for Tomorrow

This project is not just about addressing today's needs— it's about creating a sustainable foundation for Riverfields' future growth. By improving vital water infrastructure, Riverfields Development Company and its partners are ensuring that the region is ready to thrive.



# Current Project 2

## Upgrading the Balule Water Treatment Works – Enhancing Water Infrastructure in Kruger National Park

VIP Consulting Engineers, in partnership with South African National Parks (SANParks), has been appointed to upgrade and maintain the Balule Water Treatment Works (WTW). This critical infrastructure project will improve water supply efficiency, storage capacity, and treatment processes for both Balule and Satara Rest Camps in the Kruger National Park.

### Why This Project Is Essential

The existing water treatment and distribution system at Balule is aging, with multiple components showing signs of deterioration, leaks, and inefficiencies. These issues pose risks such as:

- Reduced water quality due to outdated filtration and sedimentation systems.
- Frequent maintenance disruptions affecting camp operations.
- Water loss and inefficiencies due to leaks and corroded pipelines.
- Environmental concerns with water wastage affecting local ecosystems.

This project aims to modernize and rehabilitate the entire system, ensuring a reliable, sustainable, and efficient water supply for both rest camps.

### Key Components of the Project

#### 1. Upgrading the Water Treatment Facility

The Balule Water Treatment Works supplies potable water to both Balule Rest Camp and Satara Rest Camp (38 km away). Key upgrades include:

- Rehabilitation of flocculation, sedimentation, and filtration tanks to improve water purification.
- Repairing and reinforcing concrete structures that have deteriorated over time.
- Replacing corroded pipes, valves, and sluice gates to restore full functionality.
- Upgrading the dosing area and chemical storage to ensure efficient treatment processes.


# The Future Is Here:


## South Africa's first ever Rotor Roundabout

We are excited to share that we are currently building one of the very few Rotor Roundabouts in the world.

This cutting-edge design offers a significant upgrade over traditional roundabouts and traffic signals. It can accommodate much more traffic, providing a smarter solution for smoother and more efficient traffic flow.

Being one of the first projects of its kind, we faced unique challenges. Only a handful of global experts have experience with this innovative design, which made this project even more special. Our team worked tirelessly to ensure the optimal flow of traffic, prioritize pedestrian safety, and improve vehicle efficiency.

 Location: R21 underpass near the Benoni off-ramp

 Opening: End of March

We want to extend our deepest gratitude to everyone involved in making this vision a reality. The future of traffic management is here, and we are proud to be at the forefront of this groundbreaking innovation!



# Emerging Trends in Civil Engineering for 2025

The civil engineering industry is evolving rapidly, driven by advancements in technology, sustainability, and workforce dynamics. Here's a look at the key trends shaping the future of infrastructure and construction.

## 1. Digital Transformation & Advanced Technologies:

- **Digital Twin Technology:** Engineers are increasingly adopting digital twins—virtual replicas of physical structures—to enable real-time monitoring and predictive maintenance. This technology enhances project efficiency and reduces operational costs.
- **Artificial Intelligence (AI) & Machine Learning:** AI-driven design optimization, project management, and risk assessment are streamlining decision-making and improving project outcomes.

## 2. Sustainable & Green Construction Practices:

- **Eco-Friendly Materials:** The use of sustainable materials such as recycled plastics, low-carbon concrete, and bio-based composites is on the rise, helping to reduce environmental impact.
- **Emissions-Free Construction Sites:** Cities like Oslo are pioneering emissions-free construction zones, utilizing electric machinery to significantly cut air and noise pollution.

# Interesting Civil engineering facts

## **The Great Wall of China:**

This ancient marvel, which stretches over 21 196 kilometers, is a testament to early civil engineering skills. Its construction involved advanced techniques for using local materials, adapting to diverse landscapes, and creating a structure that would last for centuries.

**Civil Engineers in Space:** Civil engineers contribute to space exploration by designing launch platforms, rovers, and research stations. For example, NASA uses civil engineering principles to build structures that can withstand extreme temperatures and forces in space missions.

## **World's Tallest Building – Burj Khalifa:**

Standing at 828 meters, the Burj Khalifa, in Dubai, is the tallest building in the world. Civil engineers had to innovate with new construction methods, including using a unique concrete mix and specially designed foundations to ensure stability in the extreme height

**Bridges That Can "Move":** Some modern bridges, like the Tower Bridge in London, have mechanisms that allow them to lift or rotate to let ships pass through. Civil engineers design these movable bridges to handle both transportation and maritime needs.

## **VIP Consulting Engineers new edition:**

**VIP Consulting Engineers is excited to announce the acquisition of flow measuring equipment, enhancing our ability to assess actual flow rates in gravitational sewer and stormwater pipes.**

This enables us to:

- Compare real-world flow data with theoretical design calculations, ensuring accuracy and efficiency in civil engineering projects.
- Gain deeper insights into future development needs, leading to smarter, more sustainable infrastructure planning.
- Support existing developments by identifying opportunities to upgrade or replace aging civil infrastructure.

This investment reinforces our commitment to precision, innovation, and excellence in civil engineering.



# The heart of VIP Consulting Engineers

At VIP Consulting Engineers, excellence isn't just what we deliver—it's who we are. Built on a foundation of expertise, innovation, and unwavering dedication, our company stands as a beacon of quality in the engineering world.

But beyond the blueprints, calculations, and projects that shape skylines and communities, it's the people behind the name who truly make VIP Consulting Engineers extraordinary. A team of visionaries, problem-solvers, and passionate professionals, each individual brings their unique talent and commitment to ensuring every project is executed with precision and integrity.

It is through their hard work, collaboration, and relentless pursuit of perfection that we continue to push boundaries, inspire trust, and create lasting impact. At VIP Consulting Engineers, we are not just building structures—we are shaping the future, one brilliant idea at a time.

To our remarkable team: your dedication is the heart of our success, and your passion is the force that drives us forward. Together, we are VIP.

Johan jr Rensburg



Johan jr. is very passionate about his job and the company. He describes VIP as family more than colleagues. He also got engaged end of 2024.

Denise Bezuidenhout



Denise has been working at VIP since 2020, marking 4 years of exceptional work here.

Nico Engelbrecht



Nico contributed to VIP for the last 4 years. His exceptional work and attention to detail have made a massive contribution to the team.

Thuso Ramela



Thuso have been walking a path with VIP since 2007. He loves to spend time with his friends and family. Thuso also values the company and appreciates every opportunity to grow.

Linah Monene



Linah began her journey with VIP in March 2007. She values the respect, cooperation, and friendly environment within the company and appreciates the opportunity to continuously learn and grow.

Henry Hoffman



Henry is the employee that can brighten up everyone's day with just his presence. He loves and appreciate VIP and its people.

Londie Mosana



Londi has been a devoted employee since 2003, working in different departments such as reception, admin, MRQ and she is currently serving in the tenders and HR department.

Kobus Smith



Kobus has been a dedicated engineer on our team since 2016. Beyond work, he's a devoted family man who loves cycling with his children, cherishing the joy and connection it brings.

Pretesh Dayal



Pretesh is loyal employee to VIP. He is busy working on SANParks projects and is excited for the future with them and seeing the end results.

Thandi Lethuku



Maricia Thenissen



Ruan du Plessis





Thandi has been a valued member of the VIP family since 2012. She loves everything about the company and her work, especially the potjiekos competitions and team-building events with her fellow colleagues. Outside of work, she enjoys spending quality time with her family and going on outings, with Durban being one of her favorite destinations.

Starting in 2025, Maricia became the newest member of the VIP team, bringing her knowledge to the finance and marketing department. Outside of work, she enjoys spending quality time with friends and family, cherishing the moments that matter most.

Ruan values the strong support of his VIP team and the excitement of each new day. At home, he cherishes time with his family, especially his little son's stories. His favorite verse, Matthew 6:34, reflects his belief in embracing each day without worry.



 VIP Consulting Engineers

 VIP Consulting Engineers

Sins 1976

[www.vipconsulting.co.za](http://www.vipconsulting.co.za)

[fanus@vipconsulting.co.za](mailto:fanus@vipconsulting.co.za)